



Vegetable Slicer TR260 veg.slicer, 2 speed, lever hopper, feed tray, ss trolley, disc rack

ITEM # _____
MODEL # _____
NAME # _____
SIS # _____
AIA # _____



CCOH65 (DTR260FL2VS)

Universal vegetable slicer for catering use, lever hopper, on stand with disc rack, ejector included. 2 speeds 330/660 rpm

Short Form Specification

Item No. _____

Universal vegetable slicer to serve 300 up to 1000 settings for table service and up to 4000 settings for catering service. 2 speeds (330/660 rpm). 2000W self-braking motor. Stainless steel motor housing and aluminium basement. "No volt release" safety device. Touch button control panel with on/off, speed selection and pulse function. Cutting disc diam. 300mm. Supplied with lever-operated hopper and mobile stainless steel support that incorporates a disc storage rack (discs not included). The touch button control panel has IP55 protection with low voltage level.

Main Features

- Continuous feed model.
- Large round (long vegetable) and large half moon feed hoppers.
- "No volt release" safety device.
- Delivered with:
 - Lever operated hopper and a mobile stainless steel support that incorporates a disc storage rack (discs not included)
- Complete selection of blades and dicing grids available (diameter 300 mm).
- Magnetic safety system and motor brake. Prevents machine from running when lever swings away or is open.
- Vegetable slicer with slicing, grating, shredding (julienne) as well as dicing and French fries cutting capability.
- Available as option a long vegetable accessory to fit in the lever operated hopper converting it into a long vegetable hopper (3 cylindrical hoppers: 50, 59,5, 70 mm diameter)
- Available upon request:
 - Automatic cylindrical hopper (dia=280 mm), long vegetable hopper (3 tubes) and cabbage hopper.

Construction

- Power: 2000 watts.
- 2 speed: 330-660 rpm.
- Stainless steel motor housing with aluminum basement and hoppers.

Components

- 1 of **603428** (DTR260F2V3) Universal vegetable slicer for catering use, motor unit, ejector included. 2 speeds 330/660 rpm.
 - **Shipping weight:** 56 kg
- 1 of **653036** (LH260) Lever-operated hopper for TR260 (including feed tray)
 - **Shipping weight:** 21 kg
- 1 of **653017** (MSX) Stainless steel mobile stand. Height: 730 mm
 - **Shipping weight:** 14.96 kg
- 1 of **653212** (DRX) Stainless steel disc rack for 300 dia. discs (to be fitted on the mobile stand basement)
 - **Shipping weight:** 3.3 kg

Optional Accessories

- Feed tray to be combined with PNC 650036 ☐ cabbage hopper and long vegetable hopper
- Stainless steel grating disc for PNC 650148 ☐ parmesan (dia. 300 mm)
- Stainless steel grating disc for PNC 650149 ☐ knoedel (dia. 300 mm)

APPROVAL: _____



Vegetable Slicer TR260 veg.slicer, 2 speed, lever hopper, feed tray, ss trolley, disc rack

| | | | | | |
|--|------------|--------------------------|---|------------|--------------------------|
| • Stainless steel grating disc 2 mm (dia. 300 mm) | PNC 650150 | <input type="checkbox"/> | • Long vegetable accessory for TR260 lever-operated hopper (to change the lever-operated hopper into long vegetable hopper) | PNC 653223 | <input type="checkbox"/> |
| • Stainless steel grating disc 3 mm (dia. 300 mm) | PNC 650151 | <input type="checkbox"/> | • Stainless steel trolley suitable to hold one 2/1 GN container (GN container not included) | PNC 653224 | <input type="checkbox"/> |
| • Stainless steel grating disc 4 mm (dia. 300 mm) | PNC 650152 | <input type="checkbox"/> | • Cabbage slicing disc with central shaft for stem removal 2 mm (to be used with cabbage feed hopper) | PNC 653227 | <input type="checkbox"/> |
| • Stainless steel grating disc 7 mm (dia. 300 mm) | PNC 650153 | <input type="checkbox"/> | • Cabbage slicing disc with central shaft for stem removal 3 mm (to be used with cabbage feed hopper) | PNC 653228 | <input type="checkbox"/> |
| • Stainless steel grating disc 9 mm (dia. 300 mm) | PNC 650154 | <input type="checkbox"/> | • Dicing grid 12 mm for TR260 | PNC 653301 | <input type="checkbox"/> |
| • Stainless steel cabbage grating disc with central shaft for stem removal 7 mm - to be combined with cabbage hopper | PNC 650157 | <input type="checkbox"/> | • Long vegetable hopper with 3 tubes diam. 50 to 70 mm for TR260 | PNC 653306 | <input type="checkbox"/> |
| • Cabbage slicing disc with central shaft for stem removal 1 mm (to be used with cabbage feed hopper) | PNC 653009 | <input type="checkbox"/> | | | |
| • Stainless steel mobile stand. Height: 730 mm | PNC 653017 | <input type="checkbox"/> | | | |
| • Lever-operated hopper for TR260 (including feed tray) | PNC 653036 | <input type="checkbox"/> | | | |
| • Automatic feed hopper for TR260 | PNC 653037 | <input type="checkbox"/> | | | |
| • Large hopper for TR260, diam. 280mm | PNC 653048 | <input type="checkbox"/> | | | |
| • Dicing grid 10 mm for TR260 | PNC 653051 | <input type="checkbox"/> | | | |
| • Dicing grid 16 mm for TR260 | PNC 653052 | <input type="checkbox"/> | | | |
| • Dicing grid 20 mm for TR260 | PNC 653053 | <input type="checkbox"/> | | | |
| • Dicing grid 25 mm for TR260 | PNC 653054 | <input type="checkbox"/> | | | |
| • Dicing grid 32 mm for TR260 | PNC 653055 | <input type="checkbox"/> | | | |
| • Slicing disc 2 mm (dia. 300 mm) | PNC 653172 | <input type="checkbox"/> | | | |
| • Slicing disc 3 mm (dia. 300 mm) | PNC 653173 | <input type="checkbox"/> | | | |
| • Slicing disc 1 mm (dia. 300 mm) | PNC 653188 | <input type="checkbox"/> | | | |
| • Slicing disc 5 mm (dia. 300 mm) | PNC 653189 | <input type="checkbox"/> | | | |
| • Slicing disc 6 mm (dia. 300 mm) | PNC 653190 | <input type="checkbox"/> | | | |
| • Slicing disc 8 mm (dia. 300 mm) | PNC 653191 | <input type="checkbox"/> | | | |
| • Slicing disc 10 mm (dia. 300 mm) | PNC 653192 | <input type="checkbox"/> | | | |
| • Slicing disc 16 mm (dia. 300 mm) | PNC 653193 | <input type="checkbox"/> | | | |
| • Shredding disc 2x2 mm (dia. 300 mm) | PNC 653195 | <input type="checkbox"/> | | | |
| • Shredding disc 3x3 mm (dia. 300 mm) | PNC 653196 | <input type="checkbox"/> | | | |
| • Shredding disc 4x4 mm (dia. 300 mm) | PNC 653197 | <input type="checkbox"/> | | | |
| • Shredding disc 6x6 mm (can also be used for chips - dia. 300 mm) | PNC 653198 | <input type="checkbox"/> | | | |
| • Shredding disc 8x8 mm (can also be used for chips - dia. 300 mm) | PNC 653199 | <input type="checkbox"/> | | | |
| • Shredding disc 10x10mm (can also be used for chips - dia. 300 mm) | PNC 653200 | <input type="checkbox"/> | | | |
| • Stainless steel disc rack for 300 dia. discs (to be fitted on the mobile stand basement) | PNC 653212 | <input type="checkbox"/> | | | |
| • Disc with corrugated blades 2 mm (dia. 300 mm) | PNC 653217 | <input type="checkbox"/> | | | |
| • Disc with corrugated blades 3 mm (dia. 300 mm) | PNC 653218 | <input type="checkbox"/> | | | |
| • Disc with corrugated blades 6 mm (dia. 300 mm) | PNC 653219 | <input type="checkbox"/> | | | |



Vegetable Slicer
TR260 veg.slicer, 2 speed, lever hopper, feed tray, ss trolley, disc rack
The company reserves the right to make modifications to the products without prior notice. All information correct at time of printing.

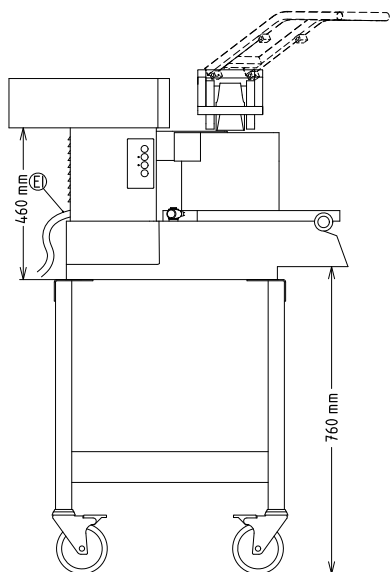
2025.12.22



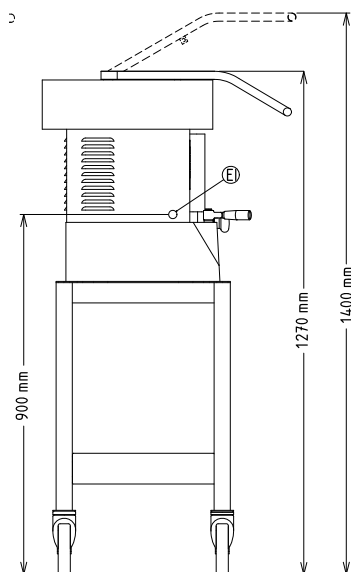
Vegetable Slicer

TR260 veg.slicer, 2 speed, lever hopper, feed tray, ss trolley, disc rack

Front

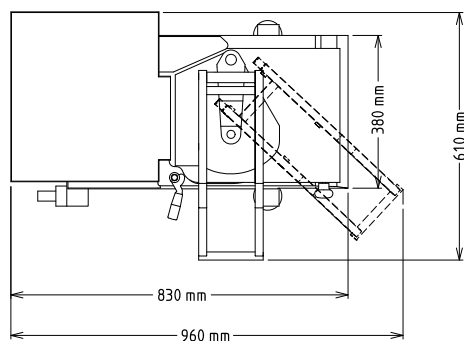


Side



EI = Electrical inlet (power)

Top



Electric

| | |
|-------------------------------|----------------------|
| Supply voltage: | 380-415 V/3 ph/50 Hz |
| Electrical power, max: | 2 kW |
| Total Watts: | 2 kW |

Capacity:

| | |
|-----------------------------|--------------|
| Performance (up to): | 700 kg/Cycle |
|-----------------------------|--------------|

Key Information:

| | |
|-------------------------------------|---------|
| External dimensions, Width: | 610 mm |
| External dimensions, Depth: | 830 mm |
| External dimensions, Height: | 1400 mm |



Vegetable Slicer
TR260 veg.slicer, 2 speed, lever hopper, feed tray, ss trolley, disc rack
The company reserves the right to make modifications to the products without prior notice. All information correct at time of printing.

2025.12.22